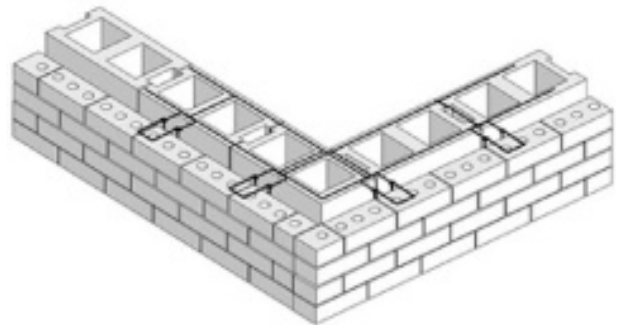
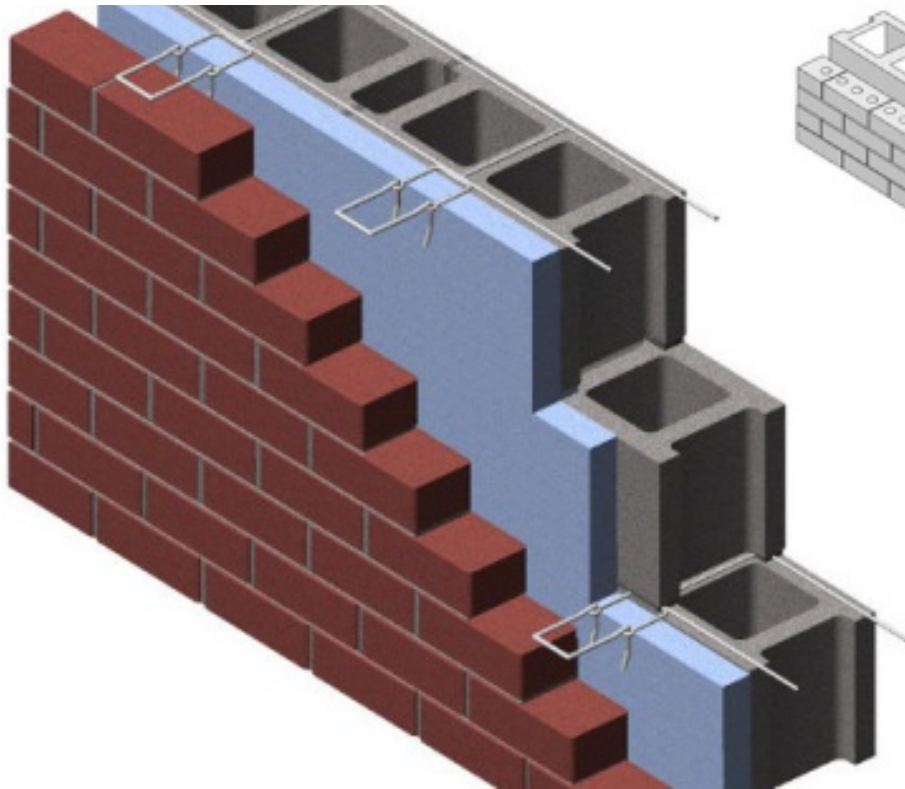


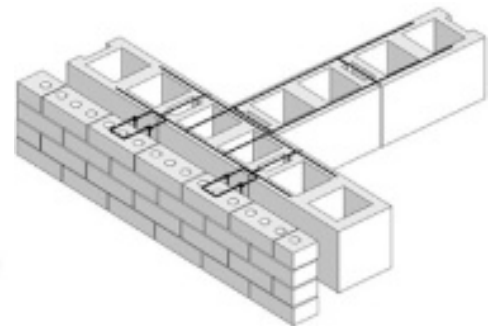
PRODUCT SUBMITTAL



Series 800 Ladder Level-Eye (Hook & Eye)



PREFABRICATED CORNER



PREFABRICATED TEE

16" O.C. cross rods allow core clearance.

- Double eye is butt welded to side rod 16" O.C.
- Height of double eye will not exceed 3/16" in bed joint.
- Easier to maintain 3/8" mortar joint.

3/16" Hook & Eye



STRUCTURAL PERFORMANCE CHARACTERISTICS

Capable of withstanding 100 lbs load in tension and compression without deforming or developing play in excess of .05 inch.

MATERIAL CONFORMANCE

ASTM A82 / A82M - (Cold drawn steel wire)
 Tensile Strength - 80,000 psi
 Yield Point - 70,000 psi
ASTM A951 / A951M-06 - (Standard Specification for Steel Wire for Masonry Joint Reinforcement)
ACI / ASCE 530 - (Building code requirements for masonry structures Mill Galvanized / Zinc Coating: **ASTM A641 / A641M (0.10 Oz per sq ft)** Hot Dip Galvanized after fabrication / Zinc Coating: **ASTM A153 / A153M-B2 (1.50 oz per sq ft)**
 Stainless Steel **ASTM 580 / 580M Type 304** (Type 316 available on special orders)



WIRE Recycled Content:
 Mill Galvanized & Hot Dip,
 87% Post-Consumer
 13% Post Industrial / Pre-Consumer,
 Stainless Steel,
 60% Post Consumer
 V O C Content - 0%

SIZES / FINISHES

WIRE SIZE:		Side Rods				Cross Rods		
Standard		9 Gauge (.148 in)			9 Gauge			
Heavy Duty		3/16" (.187 in)			9 Gauge			
Extra Heavy Duty		3/16" (.187 in)			3/16"			
BLOCK SIZE:		4"	6"	8"	10"	12"	14"	16"
PINTLE: 3/16" Standard								
Length:		3-1/4"	4-1/4"	5-1/4"	Other			
FINISHES:		Mill Galvanized	Hot Dip Galvanized	Stainless Steel				

Please state overall wall size and cavity or insulation when ordering

Corporate Office: 400 Rountree Rd Charlotte, NC 28217
 TEL: (800) 849-6722 FAX: (704) 525-3761
 Mailing Address: P.O. Box 240988 Charlotte, NC 28224



www.wirebond.com

Memphis Plant: 2365 Harbor Ave. Memphis, TN 38113
 TEL: (800) 441-8359 FAX: (901) 775-9449
 Mailing Address: P.O. Box 13124 Memphis, TN 38113